



THE RECREATION AND PARK COMMISSION  
FOR THE PARISH OF EAST BATON ROUGE

2014

# Environmental Sustainability Policy



Geaux Green Committee  
The Recreation and Park Commission for the  
Parish of East Baton Rouge  
2/17/2014



THE RECREATION AND PARK COMMISSION  
FOR THE PARISH OF EAST BATON ROUGE



**Table of Contents**

**Introduction ..... 1**

**Benefits of *Geauxing Green* ..... 1**

**Geaux Green Committee ..... 2**

    Geaux Green Committee Mission ..... 2

    Geaux Green Committee Vision ..... 2

**Strategic Goals ..... 2**

    Goal 1: Environmental Stewardship..... 3

    Goal 2: Environmental Education and Interpretation..... 4

    Goal 3: Recycling..... 5

    Goal 4: Energy Conservation ..... 6

    Goal 5: Water Conservation and Water Quality Protection ..... 8

    Goal 6: Sustainable Design and Construction of Buildings..... 9

    Goal 7: Environmentally Preferable Purchasing..... 10

    Goal 8: Monitoring and Tracking..... 11

    Table 1: Department Key to be used with Table 2 ..... 12

    Table 2: Strategic Goals Priority Chart ..... 13

**References..... 14**

**Appendix I**

**BREC’s Green Achievements..... i**

## **Environmental Sustainability Policy**

### **Introduction**

The Recreation and Park Commission for the Parish of East Baton Rouge has always been, and continues to be, committed to protecting our natural environment as part of our mission to provide parks and recreational opportunities for all citizens of East Baton Rouge Parish. The purpose of BREC's Environmental Sustainability Policy is to ensure a comprehensive environmentally sensitive and sustainable approach across all planning, programming and operations, and to realize the organization's commitment to responsible growth and environmental stewardship.

### **Benefits of *Geauxing Green***

Going green not only makes us better environmental stewards, but it will also result in cost savings, now and in the future. According to the Natural Resources Defense Council (NRDC), minimizing and redirecting waste can streamline a business's operations, save money and lessen environmental impacts. By implementing recycling we will reduce the amount of waste that is sent to landfills and help defray costs associated with waste disposal. In 1996, 130 million cubic yards of material was diverted from landfills due to recycling and composting, preventing the need for 64 additional landfills that would have been required to take the extra waste. (EPA, 2013) The impact on resource conservation is also impressive as recycling one ton of paper saves the equivalent of 17 trees and 7,000 gallons of water. (EPA, 2013) Hitting closer to home, the Baton Rouge Zoo saves \$200,000 annually in sewer usage charges with their environmentally friendly wastewater treatment system; an in-house example of the return on investments associated with green initiatives. (BREC, 1995)

Additionally, by becoming more energy efficient through lighting retrofits, heating and cooling system regulations, turning off lights and electronics at the end of the workday or on weekends, we can reduce our energy usage and thus our utility costs. For instance, in an office with 100 employees, ensuring all computers are turned off at the end of the day could save the company close to \$10,000 annually in energy costs. (Tips and Trick HQ, 2013) A study of a pilot sustainability program for the Wisconsin manufacturing industry projected \$26.9 million in cost savings over five years with an average 485% return on investment across all projects; the highest ROI in transportation initiatives. (Sage, 2011) It has been documented that business' utilizing sustainable initiatives have positive public feedback and corporations are not only increasing their brand value but also their competitiveness in a market of Millennium Generation consumers who value environmentally sustainable business ethics. (Sage, 2011)

## Geaux Green Committee

Although BREC has demonstrated its sustainability ethic through numerous green achievements in the past, there is a global and local need for an increase in sustainability efforts across the board. The Environmental Sustainability Policy is part of an initiative for BREC to become as environmentally conscience as we can within our budgetary restraints. The Geaux Green Committee was created to help develop this initiative and help BREC achieve its sustainability goals in the future. BREC's sustainability policy is centered on recycling, reducing waste and reusing resources – the three R's. Engaging and educating BREC staff and the citizens of East Baton Rouge Parish on how to be green and its benefits will be an important component of the policy led by the Geaux Green Committee.

### Geaux Green Committee Mission

It is our mission to create a vessel which promotes and initiates BREC's Environmental Sustainability Policy.

### Geaux Green Committee Vision

Our vision is for BREC to become a leader in environmental and economic sustainability while operating within our budgetary restraints. To accomplish this vision we will:

1. Begin an education campaign which not only teaches *WHY Geauxing Green* is important but also *HOW* to carry out BREC's Environmental Policy Goals.
2. Further develop BREC's recycling program starting with the Eugene A. Young Administration Offices at Milton J. Womack Park.
3. Promote an agency-wide *Geaux Green* mentality which will lay the groundwork for each Department to further develop their own green objectives and tasks.

## Strategic Goals

The Geaux Green Committee has developed strategic goals which align with both the Commission for Accreditation of Parks and Recreation Agencies (CAPRA) and EBR environmental sustainability requirements. The following goals and objectives should be considered during all planning, programming and operations when appropriate and it is the hope that in the future, these goals will be incorporated into department-specific objectives and tasks. For the purpose of this document, a goal is defined as a broad, general statement which will aide and guide BREC's decision making process. The Environmental Sustainability Policy goals have been broken down into objectives which are specific statements about future conditions or results, which should be achieved in order to attain the goals that have been set. Keep in mind that the stated objectives may not be possible for every department to achieve. The objectives in this document are suggestions in which each Department should use to create their own *Geaux Green* objectives and tasks. As the process to develop this policy progresses, the objectives and

tasks outlined may be changed or rethought to best suite BREC's policy goals. A chart of goals and objectives outlined by priority, year and applicable department can be found on page 13.



### **Goal 1 Environmental Stewardship: BREC will serve as stewards of the environment.**

As outlined in the Natural Resource Management Plan, BREC has identified environmentally significant resources under its jurisdiction and procedures to protect and preserve their quality. BREC's goal to be an environmental steward will aid in minimizing the impact of facility operations on the environment through sustainable practices and provide the businesses and citizens of EBR Parish with an example of how conservation and sustainable practices can change a community.

#### **Objective 1.I: Continue efforts to preserve natural areas in EBR Parish.**

Recent Conservation Department public surveys have indicated that the citizens of EBR appreciate natural areas within their parish and believe we should make the conservation of natural areas a priority.

- Task 1.I.A:** Continue to update the Natural Resource Management Plan and work to achieve the set goals.
- Task 1.I.B:** Continue to search for land that has high conservation value within the parish.
- Task 1.I.C:** Continue to use innovative management plans and best management practices (BMP's) to provide the best parks for EBR residents while using sustainable management practices.

#### **Objective 1.II: Communicate BREC's green achievements and partner with other agencies to expand our opportunities.**

As a National Recreation and Parks Association (NRPA) accredited agency, BREC continues to strive to be a model for other agencies locally and around the country. Through local partnerships and global outreach, BREC can share its Environmental Sustainability Policy and green achievements with others in order to assist in creating a green network of sustainable agencies which assist each other with their future goals.

- Task 1.II.A:** Develop a *Geaux Green* portion of BREC's website which provides public access to our Environmental Sustainability Policy and boasts our green achievements.
- Task 1.II.B:** Partner with local conservation groups to develop programs which educate the public/local businesses on sustainability issues and involve them in hands-on conservation work. (Refer to Goal 2 for more information)
- Task 1.II.C:** Develop a session for the Louisiana Recreation and Parks Association (LRPA) Annual Conference focusing on BREC's *Geaux Green* initiatives and accomplishments, establishing a network to help other park systems accomplish similar goals.

#### **Objective 1.III: Create a *Geaux Green with BREC* brand which conveys to the public the importance that environmentally sustainable practices continue to play in BREC's decision making process.**

Not only does an environmentally sustainable company cut costs and increase efficiency but they also gain the respect of the public and other agencies. BREC should utilize its green achievements to create a sustainable culture in EBR parish, establishing an example for local businesses and other parks systems throughout the state to follow.

**Task 1.III.A:** Market the *Geaux Green with BREC* logo on appropriate BREC publications and signage. (See Task 1.II.A and B)

**Task 1.III.B:** Utilize social media to stimulate green initiatives and market the *Geaux Green with BREC* logo.



## **Goal 2 Environmental Education and Interpretation: Increase knowledge and awareness of environmental sustainability in BREC staff and park users.**

An educated mind is a powerful thing and BREC should strive towards having a staff and community educated on sustainable practices in order to drive a powerful conservation ethic. Providing education opportunities for staff and the public can increase appreciation for the natural world and promote environmentally conscious lifestyles. Additionally, promoting awareness to local businesses and community members will help keep EBR Parish clean, making it easier to manage BREC's natural areas and facilities.

### **Objective 2.I: Develop an internal environmental sustainability education campaign.**

Making BREC a more sustainable company is a great goal but do we as employees understand how to achieve that goal? An internal education campaign will provide employees with the necessary knowledge to help BREC achieve its goals and become environmental stewards on a personal level.

**Task 2.I.A:** Identify areas where staff needs more knowledge using a survey developed by the Geaux Green Committee.

**Task 2.I.B:** Utilize BREC's internal publication, The Park Bench, to kick-off the *Geaux Green* Initiative and follow up with regular updates, success stories, tips, etc.

**Task 2.I.C:** Create awareness of new sustainable practices with signage around the administrative offices.

**Task 2.I.D:** Use [geauxgreen@brec.org](mailto:geauxgreen@brec.org) email to send out monthly fact sheets to staff with geaux green resources, updates on goals, "how to's", etc.

**Task 2.I.E:** Assign *Geaux Green* Department Ambassadors which can act as liaisons and assess department's sustainability education needs and help set up tracking programs.

### **Objective 2.II: Develop an external environmental sustainability education campaign.**

Educating the citizens who use the parks helps them further appreciate the different ways these spaces contribute to the community. Similar to the internal education campaign, residents cannot help BREC achieve its goals if they do not understand how. The external education campaign can utilize conservation agencies already at large in the community and focus on informing residents of how they can help care for BREC's parks.

**Task 2.II.A:** Identify areas where the public needs more knowledge using a survey developed by the Geaux Green Committee.

- Task 2.II.B:** Develop appropriate materials to disseminate information to the public beginning with instructional signage and leading into press releases, brochures, social media, etc. (See Task 1.III.A and B)
- Task 2.II.C:** Develop programs which involve the public in parish conservation activities, educate them on sustainable practices and foster a conservation ethic among parish residents. (Department specific, see Task 1.II.B)
- Task 2.II.D:** Develop the *Geaux Green* portion of BREC's website to provide information to the public. (See Task 1.II.A)



### **Goal 3 Recycling: Expand BREC's recycling efforts by implementing the Geaux Green Recycling Program.**

Through recycling and waste management programs we can reduce the amount of material sent to landfills every year. BREC should follow a reduce, reuse, recycle mentality and use innovative and cost effective programs to fill the need. The *Geaux Green* Recycling Program will continue to expand its current endeavors in the hopes of offering recycling programs at a majority of large facilities and events in the future.

#### **Objective 3.I: Develop a pilot Geaux Green Recycling Program at the Eugene A. Young Administration Office at Milton J. Womack Park.**

Although recycling programs currently exist at several BREC facilities, in order to meet CAPRA standards, our administrative buildings must recycle and recycling programs must include a collection of as many materials as our resources will allow. The Eugene A. Young building will kick-start the expansion of BREC's recycling programs serving as an example for future BREC facilities.

- Task 3.I.A:** Research companies and initiate a contract with a local recycling company which will allow us to recycle the most materials at the lowest cost.
- Task 3.I.B:** Re-evaluate the administrative building's housekeeping contract and follow necessary steps to ensure recycling program is incorporated into future plans.
- Task 3.I.C:** Develop a Pilot Recycling Program budget which accounts for necessary receptacles, disposal costs, signage and man-hours.
- Task 3.I.D:** Obtain necessary receptacle items needed to start the program (i.e. desk bins, larger department bins, dumpster).
- Task 4.I.E:** Develop signage which will accompany recycling receptacles to ensure the recycling process is understood and followed.
- Task 4.I.F:** One month prior to the pilot program start, begin the internal education program to ensure all employees understand the program and what is expected of them.

#### **Objective 3.II: Continue the recycling program at BREC's Baton Rouge Zoo.**

The recycling program at the zoo has been very successful and provided an example for the *Geaux Green* Recycling Program to follow. As the park that has the most visitor contacts each year, it is important that this program continues and expands as necessary.

**Task 3.II.A:** Continue to track current program success and expand or change program as needed.

**Objective 3.III: Expand the *Geaux Green* Recycling Program to special use facilities, parks and BREC events as appropriate.**

Although the pilot program will kick-start the *Geaux Green* Recycling Program, it is important we fulfill our goal to serve as stewards to the environment by implementing recycling programs at appropriate facilities and programs.

**Task 3.III.A:** Determine which BREC facilities and events can sustain and benefit from recycling programs.

**Task 3.III.B:** Develop a recycling program for individual facilities and events where recycling is necessary, outlining a budget, needed receptacles/signage and public/employee education component.

**Task 3.III.C:** Partner with conservation organizations and youth groups to develop and initiate recycling programs at large BREC events.

**Task 3.III.D:** Re-analyze and align current park operations procedures to account for recycling programs to ensure proper and cost efficient waste disposal.

**Task 3.III.E:** Partner with local businesses to sponsor recycling at certain facilities and/or events to generate project funding (i.e. bin sponsorships, equipment donations, etc).

**Objective 3.IV: Continue and expand current “Reuse” operations.**

Reusing waste materials is a cost effective form of unconventional recycling that may be under-utilized. Continuation and expansion of current reuse operations is important to reduce the materials we send to landfills and our disposal costs.

**Task 3.IV.A:** Re-analyze current programs and expand upon those which repurpose “green waste”, with the possibility of generating revenue for facilities in the future (compost, firewood, mulch).

**Task 3.IV.B:** Research the possibility of using animal waste (horse manure) for compost/fertilizer which could be sold or used at BREC community and botanical gardens and parks.

**Objective 3.V: Continue and expand current “Reduce” operations.**

Reducing generated waste is another cost effective way to reduce materials sent to landfills by not generating it to begin with.

**Task 3.V.A:** Evaluate current paperless program at BREC and expand as necessary.

**Task 3.V.B:** Promote bulk purchasing within departments to reduce waste generated.

**Task 3.V.C:** Research new, innovative ways for BREC to reduce its waste output.



**Goal 4 Energy Conservation: Reduce BREC’s energy consumption.**

In a world with dwindling resources and a growing carbon footprint, reducing energy consumption is an important agency goal. Not only would this policy aid the environment, but it would also reduce costs associated with transportation, utilities and facility operations.

**Objective 4.I: Reduce energy consumption associated with BREC’s facilities/buildings.**

One of the main ways that BREC can reduce its energy consumption is by increasing the efficiency of its buildings. Energy conservation is not only sustainable, but also cost effective.

- Task 4.I.A:** Use available data or develop and administer a survey for departments/facilities to assess their buildings' efficiency and consumption patterns.
- Task 4.I.B:** Using available data or the energy efficiency survey, develop a list of retrofitting objectives for large buildings focusing on items which are the most inefficient and cost effective to replace or change (1. light bulbs, 2. appliances, 3. light structures)
- Task 4.I.C:** Using the energy efficiency survey, develop energy conservation procedures and Best Management Practices (BMP's) for larger facilities including items like thermostat settings, hours of light use, seasonal changes for light timers, etc.
- Task 4.I.D:** Ensure that new buildings are outfitted with the most efficient appliances available within budgetary constraints and establish energy conservation procedures upon opening. (See Goal 6 for more information)
- Task 4.I.E:** Educate facility staff on energy conservation procedures and sustainability practices. (See Objective 2.I for more information)

**Objective 4.II: Reduce energy consumption associated with transportation.**

With gas prices rising every day, reducing energy consumption associated with transportation can be a lucrative task. A side benefit of this is reducing BREC's carbon footprint through reduced emissions and more efficient vehicles.

- Task 4.II.A:** Use available data or develop and administer a transportation survey to all departments, including the number of vehicles in their fleet, EPA MPG's of said vehicles, monthly mileage counts of vehicles and maintenance procedures.
- Task 4.II.B:** Using available data or the transportation survey, have departments develop plans which do any or all of the following: reduce mileage, utilize vehicles with higher MPG's than others, and establish routine maintenance which improves MPG's and vehicle efficiency.
- Task 4.II.C:** Research alternative fuel vehicles and develop a plan to incorporate them into BREC's future fleet as appropriate.
- Task 4.II.D:** Educate BREC staff which use company vehicles on energy conservation procedures. (See Objective 2.I for more information)

**Objective 4.III: Incorporate alternative energy sources into BREC's infrastructure as appropriate.**

In today's society we have many resources at our fingertips. Alternative energy sources are becoming more and more cost effective increasing a company's return on investment (ROI) now more than ever.

- Task 4.III.A:** Research technology and funding associate with solar energy and solar panel installation.

- Task 4.III.B:** Develop a future plan to incorporate solar energy into BREC's infrastructure as appropriate. (See Goal 6 for more information)
- Task 4.III.C:** Research alternative fuels. (See Task 4.II.C)

## **Goal 5 Water Conservation and Water Quality Protection: Reduce BREC's water usage and improve the water quality in EBR Parish.**

Although we live in a region with abundant water sources, reducing water usage and protecting the water quality of the sources we have, is important for reducing the impact on parish waste water facilities and ensuring a preserved landscape for our natural areas.

### **Objective 5.I: Reduce BREC's water usage.**


By improving water use efficiency of buildings and establishing water use BMP's, we will not only reduce the amount of water we use but also our utility costs.

- Task 5.I.A:** Use available data or develop and administer a survey to departments/facilities to assess water efficiency of buildings and/or park operations.
- Task 5.I.B:** Using available data or the water use survey, establish facility-specific, prioritized retrofitting objectives to replace inefficient appliances. (See Goal 6 for more information)
- Task 5.I.C:** Using available data or the water use survey, establish department/facility specific Water Conservation Procedures/BMP's which reduce water usage (i.e. irrigation standards, utility prioritization, drinking fountains, etc).
- Task 5.I.D:** Continue to incorporate sustainable designs into park facilities which will decrease water consumption and the amount of water we send to local treatment facilities. (Task 6.III.B)
- Task 5.I.E:** Continue to utilize the water treatment facility at BREC's Baton Rouge Zoo, updating and maintaining as necessary.
- Task 5.I.F:** Educate BREC staff and the public about water conservation procedures. (See Objective 2.I and 2.II for more information)

### **Objective 5.II: Increase the water quality in EBR Parish.**

Floating trash and non-point source pollution is a common issue among the watersheds in EBR Parish which affects the outdoor experience residents have in BREC parks. As an environmental steward, it is important that BREC works to increase the water quality of our parish.

- Task 5.II.A:** Develop programs in partnership with local conservation agencies which educate the public about water sheds, importance of watershed recharge and non-point source pollution and involve volunteers in public outreach/education campaigns and water clean-up days.
- Task 5.II.B:** Provide educational outlets to the public concerning local water quality and ways they can aid water quality in their water shed. (See Task 1.II.A and Goal 2 for more information)
- Task 5.II.C:** Continue to incorporate sustainable designs into park facilities which will decrease non-point source pollution and aid local water quality. (See Goal 6 for more information)

 **Goal 6 Sustainable Design and Construction of Facilities: Formally integrate sustainable design and construction methods in our day to day operations of building and maintaining park land and facilities.**

As an agency, we have control over the future design of EBR Parish's parks and facilities. It is our duty to leave a legacy of sustainability to future EBR Parish residents. Through sustainable design and construction policies, we can instill a conservation ethic in citizens by example.

**Objective 6.I: Through sustainable design, decrease light pollution in EBR Parish.**

Although light is not an obvious pollutant, degrading the value of a dark night sky with view of the stars can decrease the value BREC's parks and natural areas. It is possible to use light fixtures which illuminate necessary locations without allowing them to inefficiently spill light unto unnecessary locations.

- Task 6.I.A:** Review the Lighting Policy Proposal drafted by the Highland Road Park Observatory and formally incorporate it into park planning and operations as appropriate.
- Task 6.I.B:** Using the Energy Efficiency Survey mentioned in Task 4.I.A develop a list of light fixtures which should be updated as outlined in the final Lighting Policy Proposal.
- Task 6.I.C:** Design new facilities using more efficient light structures as outlined in the final Lighting Policy Proposal.
- Task 6.I.D:** Develop a study in which Highland Road Park Observatory assesses night viewing conditions before and after nearby facilities that are outfitted with more efficient fixtures. (Track cost reductions as well)

**Objective 6.II: Decrease BREC's energy consumption in facilities.**

As mentioned in Goal 4, BREC should attempt to reduce our energy usage to lessen our carbon footprint and our costs. By designing facilities which work to benefit the environment instead of impact it, BREC is reaching multiple goals at once.

- Task 6.II.A:** Update inefficient appliances as outlined in Task 4.I.B.
- Task 6.II.B:** Develop a plan for which facilities would benefit most from solar panels focusing on those which our ROI would be highest through selling energy back to the grid. (See Objective 4.III for more information.)
- Task 6.II.C:** Incorporate energy efficient designs into new facilities which focus on insulation, windows and building placement to decrease energy usage.
- Task 6.II.D:** Research funding opportunities associated with sustainable design and partner with universities or agencies as appropriate.

**Objective 6.III: Through sustainable design, continue to increase BREC's positive impact on local water sheds and water treatment facilities.**

As mentioned in Goal 5, BREC should continue to attempt to reduce the amount of water we send to local treatment facilities and work to better water quality in the area. By designing facilities which work to benefit the environment instead of impact it, BREC is reaching multiple goals at once.

- Task 6.III.A:** Update inefficient appliances as outlined in Task 5.I.B.

- Task 6.III.B:** Incorporate water conservative designs into new facilities which focus on efficient appliances and alternative treatment options to decrease the amount of water we send to local treatment facilities. (Task 5.II.D)
- Task 6.III.C:** Incorporate designs into new facilities which help local water quality focusing on parking lots (use Bluebonnet Swamp Nature Center as model) and native vegetation planting designs to filter storm water and decrease non-point source pollution.

**Objective 6.IV: Through sustainable design, protect the integrity of the natural habitats of EBR Parish.**

According to public surveys, the residents of EBR Parish care about conserving local natural areas which includes the diverse and sometimes rare habitats found in our parks. Those facilities which require development for public use should attempt to incorporate and preserve the native habitat as much as possible.

- Task 6.IV.A:** Incorporate native vegetation plantings and pre-existing native vegetation into park designs.
- Task 6.IV.B:** Attempt to preserve or restore pre-existing habitat as appropriate.
- Task 6.IV.C:** Increase tree cover in urban parks and public areas as available to help diminish the effects of urban heat islands.
- Task 6.IV.D:** Survey parks with conservation area aspects to create a database of BREC's natural resources and habitats.
- Task 6.IV.E:** Monitor parks with conservation area aspects pre and post development to assess impacts of design and effectiveness of BMP's. (Task 1.I.A)



**Goal 7 Environmentally Preferable Purchasing: Increase purchasing of Environmentally Preferred Products (EPP's) and incorporate a sustainable mentality into current purchasing procedures.**

The benefits of purchasing Environmentally Preferred Products (EPP's) range from them being easier to recycle, reducing the amount of toxins and pollution released into the environment, reduces potential health affects and supports a growing "green industry". Additionally, changing our current purchasing procedures to reflect our sustainable ethic could reduce our waste and make us more efficient.

**Objective 7.I: Assess BREC's ability to increase purchasing of EPP's.**

In order to achieve our goal, we must assess what EPP's we are currently purchasing and where there is a need and availability to increase EPP usage.

- Task 7.I.A:** Assess current data or create and administer a survey for departments to complete regarding current purchasing practices and areas where increasing purchase of EPP's is possible.

**Objective 7.II: Create an EPP Policy which is followed by BREC and its vendors and contractors.**

Once we have an understanding of our current EPP usage and how we can increase it, a policy should be drafted so that a standard is followed by not only BREC, but our constituents.

- Task 7.II.A:** Research EPP alternatives to currently non-EPP products and chart cost difference.
- Task 7.II.B:** Draft a policy to incorporate EPP's into current inventory and have applicable departments review.
- Task 7.II.C:** Incorporate approved EPP Policy into park operations and maintenance procedures.

**Objective 7.III: Align current purchasing procedures to reflect an environment sustainability mentality.**

Although purchasing EPP's will help us achieve Goal 7, not buying in bulk or overstocking unnecessary items will increase our waste output and our costs.

- Task 7.III.A:** Update inventory systems to increase the efficiency of purchasing and eliminate overstocking.
- Task 7.III.B:** Incorporate purchasing procedures into the policy described in Task 7.II.B to include items such as buying in bulk and eliminating overstocking of items that will ultimately expire prior to use.



**Goal 8 Monitoring and Tracking: Develop a means of monitoring our goals and tracking our achievements.**

BREC should make a reasonable effort to monitor their environmental sustainability goals and track accomplishments in our conservation efforts. Each department should keep a “bragging list” and the Conservation Department will compile an agency-wide list of accomplishments. Trackable goals are important to show the public what we have accomplished and could aid in future funding opportunities.

**Objective 8.I: Generate a “bragging list” of green achievements which is updated annually.**

A “bragging list” is important for a variety of reasons, including showing how we are meeting CAPRA standards, showing the community examples of our environmental stewardship and allowing us to lead by example for other agencies.

- Task 8.I.A:** Compile a department-specific list of past green achievements to date using responses to the Environmental Sustainability Questionnaire.
- Task 8.I.B:** Establish a standard form for departments to complete which will be updated annually with new accomplishments for the year and submitted to the Conservation Department.
- Task 8.I.C:** Compile the department “bragging lists” at the end of each year and add to the master “bragging list” to be used on the website.

**Objective 8.II: Develop a way to track sustainable practices mentioned in above goals and objectives.**

It is important that BREC tracks its achievements and costs associated with our sustainability practices accurately and efficiently.

- Task 8.II.A:** Create a method to track recycling efforts at facilities and programs including which materials were recycled and how much (weight).

- Task 8.II.B:** Create a method to track energy usage decreases after facilities are updated with energy efficient appliances (cost, kw/h).
- Task 8.II.C:** Create a method to track decreases in water consumption (cost, gallons).
- Task 8.II.D:** Utilize water quality studies (Task 5.II.A) and light pollution study (Task 6.I.D) to track before and after conditions of water sheds and the night sky.
- Task 8.II.E:** Develop a system in which facilities/programs track progress, compile and then submit to Conservation Department.

**Objective 8.III: Market and advertise BREC's green achievements.**

As important as it is to track and monitor BREC's green achievements, it is also important to make those achievements available to the public.

- Task 8.III.A:** Update the *Geaux Green* section of BREC's website with "bragging list" and sustainable practices underway. (Task 1.II.A)
- Task 8.III.B:** Develop appropriate media to advertise our environmental stewardship and green achievements. (Task 2.II.B)

**Table 1. Department key to be used with Table 2.**

Abbreviation	Department/Facility
Comm.	Communications Department, Print Shop, Volunteer/Special Events
Cons.	Conservation Department
Finance	Finance Department, Payroll, Purchasing
HR	Human Resources Department, Risk Management Department, Park Rangers
IT	Information Technology Department
Park Op	Park Operations Department
P/E	Planning & Engineering Department
Rec.	Recreation Department, Recreation Programs, Outdoor Adventure, Summer Camps, Recreation Centers, Tennis, Golf, Aquatics, Fitness, Athletics, Adult Leisure, Inclusive Recreation
Spec. F.	Special Facilities Department, Bluebonnet Swamp Nature Center, Extreme Sports, Farr Park Equestrian Center, Magnolia Mound, Oak Villa Sports Park, Burbank Soccer Complex, Highland Road Park Observatory, Independence Park Theatre, Stadiums, Dog Parks, Baton Rouge Gallery
Zoo	BREC's Baton Rouge Zoo

Table 2. Strategic Goals Priority Chart

Goal	2014	Depts.	2015-2020	Depts.	2021-2025	Depts.
<b>Goal 1:</b> Environmental Stewardship	Objective 1.I (all) Objective 1.II (all) Objective 1.III (all)	Comm. Cons. P/E Rec. Spec. F. Zoo	Objective 1.I (all) Objective 1.II (all) Objective 1.III (all)	Comm. Cons. P/E Rec. Spec. F. Zoo	Objective 1.I (all) Objective 1.II (all) Objective 1.III (all)	Comm. Cons. P/E Rec. Spec. F. Zoo
<b>Goal 2:</b> Env. Education and Interpretation	Objective 2.1 (all) Objective 2.II Task 2.II.C, B	Comm. Cons. Rec. Zoo	Objective 2.II Task 2.II.A, B	Comm. Cons. P/E		
<b>Goal 3:</b> Recycling	Objective 3.I (all) Objective 3.II (all) Objective 3.III Task 3.III.C Objective 3.V Task 3.V.A	Cons. Finance HR Rec. Spec. F. Zoo	Objective 3.III (all) Objective 3.IV (all) Objective 3.V Task 3.V.B,C	Cons. Finance HR IT Park Op P/E Rec. Spec. F. Zoo	Objective 3.III (all) Objective 3.IV (all) Objective 3.V Task 3.V.B,C	Cons. Finance HR IT Park Op P/E Rec. Spec. F. Zoo
<b>Goal 4:</b> Energy Conservation	Objective 4.I Task 4.I.A Objective 4.II Task 4.II.A	Cons. HR Park Op P/E Rec.	Objective 4.I Task 4.I.B,C,D,E Objective 4.II Task 4.II.B,C,D Objective 4.III (all)	Cons. HR IT Park Op P/E Rec. Spec. F.	Objective 4.III (all)	Cons. HR IT Park Op P/E Rec. Spec. F.
<b>Goal 5:</b> Water Conservation and Water Quality Protection	Objective 5.I Task 5.I.A,F Objective 5.II Task 5.II.A,B,C	Comm. Cons. Park Op P/E Rec.	Objective 5.I Task 5.I.B,C,D,E,F Objective 5.II Task 5.II.A,B,C	Cons. Park Op P/E Rec. Spec. F. Zoo	Objective 5.I Task 5.I.B,C,D,E,F Objective 5.II Task 5.II.A,B,C	Cons. Park Op P/E Rec. Spec. F. Zoo
<b>Goal 6:</b> Sustainable Design and Construction of Buildings	Objective 6.I Task 6.I.A Objective 6.IV Task 6.IV.A,B,C	Cons. Park Op P/E Spec. F.	Objective 6.I Task 6.I.A,B,C,D Objective 6.II (all) Objective 6.III (all) Objective 6.IV Task 6.IV.A,B,C,D,E	Cons. Park Op P/E Rec. Spec. F.	Objective 6.I Task 6.I.A,B,C,D Objective 6.II (all) Objective 6.III (all) Objective 6.IV Task 6.IV.A,B,C,D,E	Cons. Park Op P/E Rec. Spec. F.
<b>Goal 7:</b> Environmentally Preferable Purchasing			Objective 7.I (all) Objective 7.II (all) Objective 7.III (all)	Cons. Finance HR IT Park Op P/E Rec. Spec. F.	Objective 7.II Task 7.II.C Objective 7.III (all)	Cons. Finance HR IT Park Op P/E Rec. Spec. F.
<b>Goal 8:</b> Monitoring and Tracking	Objective 8.I (all) Objective 8.II Task 8.II.A Objective 8.III (all)	Cons.	Objective 8.II Task 8.II.B,C,D,E Objective 8.III (all)	Cons. Park Op Rec. Spec. F. Zoo		

\*See Table 2 for Department abbreviations key. Goals have been charted based on priority to complete in the next year, five years or ten years. Some categories include all the Tasks for that Objective while some only include those listed below it. Not all

Objectives/Tasks will pertain to all departments listed. Departments listed within a Goal should evaluate which Objectives and Tasks listed pertain to them.

### **References**

BREC, Zoo Achieves Big Savings with Wastewater System. Louisiana Environmentalist, May-June, 1995.

EPA, Communicating the Benefits of Recycling, Website <http://www.epa.gov/osw/conserve/tools/localgov/benefits/>, Last updated April, 2013.

NAPCOR, Single-Serve Recycling Toolkit: A Comprehensive Guide to Venue and Event Recycling. <http://www.napcor.com/pdf/SingleServeToolkit.pdf>, No date given.

NRDC, Smarter Business: Greening Advisor, Website. <http://www.nrdc.org/enterprise/greeningadvisor/wm-recycling.asp>, No date given.

Sage Habra HRMS, The Benefits of Paperless HR: Sustainable, Cost-Effective, and Within Your Reach. <http://na.sage.com>, 2011.

Tips and Tricks HQ, Energy saving tip-How much money can you save by turning off your computer overnight? Website. <http://www.tipsandtricks-hq.com/energy-saving-tip-how-much-money-can-you-save-by-turning-off-your-computer-overnight-404>, Last updated 2013.

## Appendix I

### BREC's Green Achievements

*Geauxing Green* is not a new concept for the departments and programs at BREC. Currently, BREC has numerous sustainability initiatives in place that have successfully reduced our environmental impact and marked us as stewards of EBR Parish. It is important that green achievements are documented so that BREC employees, EBR Parish residents and agencies around the nation are aware of our hard work and the associated success'. The following is a "bragging list" of past and current green achievements organized by Strategic Goals and Objectives.

#### Goal 1: Environmental Stewardship

##### ➤ **Communications Department**

Objective 1.II: Educates the public on BREC's efforts in conservation, recycling and smart construction efforts. The department has started this endeavor by creating a *Geaux Green* page on BREC's website announcing BREC's green efforts.

Objective 1.III: The Communications Department created the *Geaux Green with BREC* logo which will help to accomplish the goal of creating a *Geaux Green with BREC* brand conveying to the public the importance environmentally sustainable practices continue to play in BREC's decision making process.



*Geaux Green with BREC logo designed by the Communications Department for use in the Geaux Green with BREC Campaign.*

##### ➤ **Conservation Department**

Objective 1.I: The Conservation Department updates and carries out the goals set in the Natural Resources Management Plan. Since the plan's creation in 1994, the Conservation Department has joined the Planning and Engineering Department in achieving the goals outlined in the plan and updating it every 5 years or so. Since the first Natural Resources Management Plan and the Conservation Land Survey in 1994 were generated, BREC has successfully acquired 1,995 acres of land designated strictly for conservation use. This includes Bluebonnet Swamp Nature Center and seven other parks set aside solely as conservation land such as Frenchtown Road Conservation Area and Blackwater Conservation Area. In addition to those, 16 other BREC parks contain conservation areas within them. The Conservation Department along with the Planning and Engineering Department continue to survey the parish for opportunities to acquire natural areas.



From Left: Ribbon cutting at Frenchtown Road Conservation Area, Blackwater Conservation Area Restoration Project in partnership with U.S. Army Corp and City Parish.

Objective 1.II: The conservation department partners with agencies such as the Baton Rouge Audubon Society, LSU’s Coastal Roots, the Youth Wetlands Program, LSU Ag Center and School of Renewable Natural Resources to conduct public outreach programs and involve the community in projects which help fulfill the goals of the Natural Resource Management Plan. These include service learning projects, trail clearing, invasive species removal and native tree plantings.



From Left: Cub scouts partner with BREC for tree planting at Blackwater Conservation Area; local high school students remove invasive species at Greenwood Community Park.

Objective 1.III: Worked in conjunction with the Geaux Green Committee to generate the Environmental Sustainability Policy which sets a standard for the *Geaux Green* with BREC initiative to follow.

### ➤ Park Operations Department

Objective 1.I: Park Operations have created “No-Mow” and “Reduced-Mow” areas within parks. In 2012 and 2013, Park Ops determined several areas of parks that were un-utilized by the public and could serve as conservation/natural land. These sites include: Jones Creek Park, Doyle’s Bayou, Flanacher, Clifford T. Seymour, Woodlawn Acres, and Hooper Road Parks. The “Reduced-Mow” areas at these sites have eliminated approximately 75 acres of regular mow area. This has translated into reduced fuel usage for equipment and more habitat for natural wildlife. The habitat’s integrity and ecosystem

dynamics are preserved within relatively urban areas through this program. As a result of this strategy, BREC saves an estimated \$35,000 per year in mowing costs on this acreage.



From Left: “No-Mow” nature areas in Flanacher Road Park and Doyle’s Bayou Park. A map of the “No-Mow” zone in Woodlawn Acres indicating how much land is left as natural space.

➤ **Planning and Engineering Department**

**Objective 1.I:** The Planning and Engineering Department along with the Conservation Department and Assistant Superintendent oversee the purchasing of land with high conservation value within the parish. This has resulted in eight dedicated Conservation Areas including Bluebonnet Swamp Nature Center, totaling 876 acres along with 16 other parks with conservation components for a total of 1,995 acres of BREC conservation land within the parish.

The Department also oversees construction projects and the design and development of new park structures using appropriate BMP’s to reduce environmental damage. Construction policies ensure low impact during development and long-term design plans ensure the impact remains low throughout the life of the park. Examples include storm water management practices such as sediment traps and erosion control, along with parking lots designed to reduce runoff and filter storm water.



From Left: “How is this parking lot like a Forest” signage explaining BREC’s innovative storm water drainage parking lot design. Construction sites showing BMP’s being used to reduce impact.

➤ **Outdoor Recreation**

**Objective 1.II:** The Outdoor Recreation Program partners with agencies like Leave No Trace and the 4H Youth Wetlands Program to educate local youth about

conservation practices. They also coordinate volunteer efforts with LSU, the BREC Out! Program and local schools to pick up trash and remove invasive species from BREC parks.



*From Left: BREC Out! and Youth 360 programs learn about conservation through partnerships and work hard to keep BREC's natural areas beautiful through trash pick-ups.*

### ➤ Special Facilities

#### **Bluebonnet Swamp Nature Center (BSNC)**

Objective 1.I: Identifies and prioritizes areas in need of restoration within Bluebonnet Swamp to ensure the health and conservation of native habitats. Periodically reviews and opines BREC's Natural Resources Management Plan. Uses Best Management Practices (BMP's) whenever possible for on-site design, operation and management. The swamp administration has worked with construction contractors on adjacent properties to encourage the use of sediment fences and the reduction of construction site garbage and debris. BSNC also has a highly-acclaimed, porous parking lot designed with an array of features meant to slow and filter run-off and allow for proper sediment trapping. BSNC has also used native planting in the landscapes and continue to remove invasive species when possible.



*From Left: Winter campers help nature center staff manage the natural meadow by sowing seeds; native plants await planting by LSU volunteers attempting to eradicate invasives. Public outreach events involve conservation partners in educating the public about sustainability.*

Objective 1.II: Bluebonnet Swamp Nature Center also cultivates partnerships to assist in on-site conservation projects and development of environmental education programs. They have a significant list of partnering organizations that assist

in everything from habitat restoration to bird population monitoring and feeding. In 2013 their list of partners included LSU's Center For Community Engagement Learning and Leadership, Baton Rouge Audubon Society, Capitol Area Native Plant Society, 4-H Youth Wetlands Education and Outreach Program, Wild Birds Unlimited, LA Public Broadcasting, Youth 360 Program, Baton Rouge Coalition and the Louisiana Art and Artists' Guild.

➤ **Zoo**

Objective 1.II: Through the development of partnerships with organizations that educate children about the importance of sustainability, such as; Baton Rouge Green, Youth Wetlands Program, America's Wetlands and Coastal Roots Program, the Zoo was able to offer their site for the organizations to teach, both their students and the Zoo's campers. The process included workshops, classes and hands on activities such as a reforestation effort with native plants throughout the Zoo. Additionally, through a developed partnership with The Recycling Foundation of Baton Rouge, the Zoo has been able to develop an in-house recycling program.



*From Left: Zoo campers learn about conservation issues and local sustainability efforts from local partners. Projects during camp have included native plant restorations and ecosystem exploring.*

**Goal 2: Environmental Education and Interpretation**

➤ **Communications Department**

Objective 2.II: Assists the Outdoor Recreation Program and Conservation Department in the advertising of conservation related programs and public outreach events. Generates brochures and material to help disseminate information to the public and created a Geaux Green with BREC pad for BREC's website which informs the public about the campaign and provides a "bragging list" of BREC's to-date green achievements. Special Events staff also helps to coordinate volunteers for large-scale conservation service projects.



*The Geaux Green with BREC webpage is designed to generate awareness for BREC's green efforts and focus on environmental sustainability.*

## ➤ Conservation Department

Objective 2.I: Working to develop an internal education campaign along with the Geaux Green Committee for the kick-off of the recycling program at Eugene A. Young Administrative Offices. With the help of Progressive Waste and BREC Special Facilities staff, two employee education seminars will be held to make sure employees working within the building are aware of the new recycling policies and how to use the bins. Additionally, during the development of the Environmental Sustainability Policy, BREC's department heads were made aware of BREC's renewed focus in its green efforts and requested their input in the generation of the document. Departments were also asked for a list of green practices already in place and a list of possible future goals their department could strive towards.

The Conservation Department and the Geaux Green Committee worked together to create and man a *Geaux Green with BREC* booth at the 2013 BREC Open Enrollment fair. The booth was designed to educate employees about the generation of the Environmental Sustainability Policy, and the effort to start recycling at BREC facilities. The campaign featured up-cycling crafts, a bottle cap guessing game and "what goes in the bin" game. Overall, the booth was well received and employees seemed excited that recycling may be possible at BREC parks and facilities.

Objective 2.II: In 2013, the Conservation Department put together the first America Recycles Day event in City-Brooks Community Park. The event was created to generate awareness about recycling, reducing and reusing waste. Through the help of partnerships with LSU Environmental, Plant and Soil Sciences classes, Leave No Trace, Joule Energy, Structure Green and the Capitol Area Corporate Recycling Council, BREC was able to offer an electronic recycling donation drop-off, up-cycling kids crafts, a recycling scavenger hunt and provide information about composting, recycling, leaving no trace, solar energy and energy reduction strategies. Through the event, BREC collected

1,404 pounds of recyclable electronics equal to saving the amount of energy used by 5 households for a year or removing 3.8 passenger cars from the road. In total, BREC's collected donations added up to \$5,295.00 worth of cost savings.



*The America Recycles Day Event in 2013 was one of BREC's first public outreach events designed specifically to educate the public about Geauxing Green, it was the first Geaux Green with BREC event.*

The Conservation Department and Geaux Green Committee have also applied for a recycling bin grant to provide public recycling at three of BREC's Community Parks. If the grant is won, Keep Louisiana Beautiful has agreed to award BREC with an additional \$5,000 grant to aid in the public education campaign and cost of the dumpsters to jump start the program. The Conservation Department is currently working on a sign proposal which will include temporary advertising notifying park visitors that the recycling program has started and more permanent signage reminding patrons how and why to use the recycling receptacles.

The Conservation Department also works independently and with partners to provide programming at parks that educate the public and instill a conservation ethic. Monthly "Woods Walks" which are held at a different Satellite Conservation Area every month and cover a variety of environmental topics. They include a guided hike around the park while a BREC naturalist points out interesting facts about local ecology and the environment. Other programs include service-learning and volunteer projects with partners such as the Youth Wetlands Program and Leave No Trace which not only help to accomplish conservation management goals, but also teach volunteers about conservation. Additionally, in the summer of 2014 the Conservation Department will be involved in BREC's general summer camps taking campers on field trips to Satellite Conservation Areas and teaching them about wetlands, wilderness navigation and forest ecology.



*From Left: A group of cub scouts investigate a turtle shell at Frenchtown Road Conservation Area as they pick up trash and learn about local ecology; A BREC Naturalist discusses wetlands and local fauna during the February Woods Walk hike; high school students help blaze a new trail at Greenwood Park.*

## ➤ Recreation

### Outdoor Recreation

Objective 2.II: The BREC Out! Program run by BREC's Outdoor Recreation staff is designed to bring inner city children out into nature while teaching them leadership and instilling a conservation ethic. Groups take field trips to BREC and state-run parks, hike, conduct service learning projects and go on overnight camping trips. During these trips, BREC staff educates students on local ecology and how to reduce their impact on the environment. The program currently consists of six local schools and will be expanding in the future.

## ➤ Special Facilities

### Bluebonnet Swamp Nature Center

Objective 2.I: The BSNC works to incorporate environmental stewardship themes into staff trainings. They conduct ongoing staff training to discuss latest trends/topics in environmental stewardship and conservation so they can relay this information to park visitors and during programming. Staff are selected for their background and interest in the Swamp's mission and regularly meet to discuss current trends in these areas.

Objective 2.II: BSNC also strives to incorporate environmental stewardship into all programs, signage, exhibits, etc., and regularly develops education materials and programs for patrons that incorporate themes of environmental stewardship and conservation. Facilitated programs such as hikes, discussions, crafts, games and other activities focus in these areas as well. The very nature of the center is to promote nature education and encourage environmental stewardship and conservation.

### **Highland Road Park Observatory**

Objective 2.I: The HRPO continues to encourage BREC, one of the three partners in HRPO, to cap and shield all outdoor lighting, to use only the illumination necessary for public service and to shut off lighting when not in use. This campaign includes educating BREC employees why the reduction of light pollution is necessary and how it can be achieved. To aid in this process, HRPO staff generated a Light Pollution Reduction Proposal which outlines the steps necessary for BREC and local community members to reduce unnecessary light in the night sky.

Objective 2.II: It is the HRPO's goal to reduce light pollution within HRPO's service area of 80 kilometers (50 miles) through the "20/20 Vision Campaign". This ongoing campaign which includes HRPO's partners, Louisiana State University and the Baton Rouge Astronomical Society, educates the public and generates awareness about light pollution in an attempt to raise the Sky Quality level at HRPO's back viewing pad from 18.77 to 20.00 by HRPO's 20<sup>th</sup> anniversary in the fall of 2017. Additionally, HRPO helps its patrons perceive sky glow, light trespassing and glare as actual environmental concerns. HRPO has been established as a reference for GLOBE, a world-wide scientific database for students, at Night and the Great World Wide Star Count, which are annual citizen science exercises designed to assist students, families and taxpayers in gauging the amount of "lost" sky in various areas.

#### ➤ **Zoo**

Objective 2.I: The Zoo currently has an internal environmental sustainability education plan which is presented to Zoo employees during training by the Green Team. The Green Team is a committee comprised of Zoo employees who volunteer from all departments and have monthly meetings to discuss sustainability goals and opportunities.

Objective 2.II: The Zoo also has an external environmental sustainability education plan which includes environmental education classes given to Zoo campers which discuss recycling and conservation efforts throughout the Zoo.

### **Goal 3: Recycling**

#### ➤ **Communications Department**

Objective 3.I: The Print shop located in the Eugene A. Young Administrative Offices has been recycling used paper for several years reducing waste generated by the shop and helping the environment. Additionally, the entire Communications Department will participate in the pilot recycling program which will begin March 1<sup>st</sup>, 2014.

Objective 3.IV: The Communications Department print shop also reuses and repurposes the cardboard boxes in which reams of paper are delivered cutting down on waste.

### ➤ Conservation Department

Objective 3.I: The Conservation Department worked in conjunction with the Geaux Green Committee and Special Facilities Department to start the pilot recycling program at the Eugene A. Young Administrative Offices. The program is expected to commence March 1<sup>st</sup>, 2014 and the Conservation Department is working to educate office staff on the new recycling procedures with the help of Progressive Waste Solutions. The internal education campaign will consist of an article in the Park Bench, along with an all-employee training session, signage around the building and periodic emails. The department also coordinated with the city recycling office to receive donated desk-side bins to start the pilot program.



*From Left: Recycled material collected from the Burbank soccer tournament and BREC conservation staff working to collect the material; the education posters used to prepare staff for the start of the single stream recycling program at the administrative offices and an example recycling bin that would be used at three BREC Community Parks if the grant is received.*

Objective 3.III: The Conservation Department has completed a park bin grant sponsored by Keep America Beautiful and the Dr. Pepper/Snapple Group. If awarded, the grant would provide recycling bins for three of BREC's Community Parks including City-Brooks Community Park, Perkins Road Community Park and Forest Community Park. The grant was completed with the help of BREC partner, Keep Louisiana Beautiful, who has agreed to award BREC with a \$5,000 grant to go towards recycling dumpster fees and the public education campaign to kick-start the program. The department is currently in the process of applying for a second Keep America Beautiful grant sponsored by Coca-Cola for recycling receptacles at BREC's larger sports complexes such as Burbank Soccer Complex, Oak Villa Sports Park, Hartley/Vey Sports Park and Central Sports Park.

In the past, the Conservation Department has worked in conjunction with BREC park operations staff, the local soccer club and boy scout troops to

provide recycling at large events in BREC parks. The 2010 soccer tournament held at BREC's Burbank Soccer Complex was one of the largest public recycling events that BREC coordinated.

➤ **Park Operations**

Objective 3.I: The entire Park Operations Department located at the Eugene A. Young Administrative Offices will participate in the pilot recycling program when it commences in March.

Objective 3.III: BREC Park Operations has been working in conjunction with the Conservation Department to make arrangements and generate a plan to start a public recycling program. Park Operations staff will be involved in the pilot program which may commence in the summer of 2014 at three community parks.

Objective 3.IV: Park Operations sells used oil, generated from our equipment and vehicles, back to an oil company that refines and recycles it to be used again. This provides revenue to the department as well as helps reuse and recycle a product.

Objective 3.V: Over the past several years, it has been a goal of Park Operations to reduce the amount of fuel used in their daily duties. They accomplished this in several ways including reducing the number of trips back and forth to the DPW landfill (location in Baker/Zachary) and contracting with a private waste removal company to place dumpsters in strategic locations. This gives them the option to dump within BREC maintenance districts, versus having to drive to the landfill each time a trash truck was full. Additionally, Park Operations reduced the size of some of the vehicles within the fleet, thus burning less fuel. They also designed and installed cages on the back of BREC trucks at each grounds shop. This gave each crew the ability to put trash in the back of a ¾ ton truck and bring to a dumpster each day. Park Operations also utilizes trailers to haul more trash by one vehicle, which has further increased our productivity and reduced the amount of fuel used.

➤ **Planning and Engineering**

Objective 3.I: For several years the Planning and Engineering Department has been conducting basic recycling procedures at the Eugene A. Young Administrative offices. Some employees collect all types of recyclables and bring them home to put in their personal bins. The entire Planning and Engineering Department

located at the Eugene A. Young Administrative Offices will participate in the pilot recycling program when it commences in March.

Objective 3.V: The department utilizes BREC promotional cups, mugs and thermoses in the office instead of using styrofoam cups and bottled water to reduce on waste generated. Additionally, tablets and/or notepads are made from scrap paper, paper that may have been printed wrong or is not needed, in order to reduce the amount of paper waste and reuse material. Computer print settings are automatically set to print front and back and they only print color prints on the color printer. All black and white prints are printed on the larger copier. This reduces the cost of the more expensive color ink cartridges.

### ➤ **Recreation**

Objective 3.I: Since 2012, the Recreation Department has been recycling paper products at the Eugene A. Young Administrative Offices. They procured two bins to use within their department and sufficiently labeled them to ensure staff used them effectively. The entire Recreation Department located at the Eugene A. Young Administrative Offices will participate in the pilot recycling program when it commences in March.

### **Outdoor Recreation**

Objective 3. I: The entire Outdoor Recreation Department located at the Eugene A. Young Administrative Offices will participate in the pilot recycling program when it commences in March. They also participated in the paper recycling program generated by the general Recreation Department in 2012.

### **Tennis**

Objective 3.I: The entire Tennis program located at the Eugene A. Young Administrative Offices will participate in the pilot recycling program when it commences in March.

Objective 3.IV: Currently, BREC Tennis Centers have a tennis ball recycling program. The tennis balls collected from the courts are given to schools, nursing homes and police departments for their various needs. Tennis ball cans are given to the BREC maintenance departments and school art departments. Fliers that are printed for programs/events that become out dated are used for scratch paper and printing cash journals on the reverse side.

Objective 3.V: Tennis Center staff ask all patrons if they would like a receipt for their purchase to reduce the number of receipts that are printed.

➤ **Special Facilities**

**Bluebonnet Swamp Nature Center**

Objective 3.III: BSNC currently provides recycling receptacles at the nature center building for public use. The collected recyclables are collected by BSNC staff and brought to the recycling center on their own time.

Objective 3.IV: Some recyclable materials are collected and repurposed for crafts and projects at the center.

**Eugene A. Young Administrative Offices (All Departments)**

Objective 3.I: Although several departments located within the administrative building off Florida Blvd. have started limited recycling programs on their own, starting March 1, 2014, the entire Eugene A. Young Administrative Offices will participate in a single stream recycling program. Desk side bins, donated by the City/parish recycling office will be located at every desk and in every conference room, break room and other rooms which generates waste. Bins will be lined with a clear garbage bag and emptied by housekeeping staff once daily as needed. It is expected that regular amounts of generated waste will be reduced by the start of the recycling program. There will be a recycling dumpster located on the property which will be emptied by Progressive Waste Solutions once a week. The internal education campaign commenced in February 2014 to prepare the staff for the start of the program.

➤ **Zoo**

Objective 3.II: The Zoo began an internal recycling program approximately 10 years ago. In the fall of 2011, the Zoo expanded this effort and developed a more organized in-house mixed recycling program. The program was introduced to employees with an education campaign in the spring of 2012. By the end of the year, Zoo employees had recycled 624 cubic yards of waste, doubling from the previous year's efforts.

Objective 3.IV: As a result of the environmental education campaign, departments throughout the Zoo have made a conscience effort to repurpose used items and their containers. For example, used feed bags become trash bags, and plastic salt containers from the aquarium are used for storage.

**Goal 4: Energy Conservation**

➤ **Conservation Department**

Objective 4.I: The Conservation Department attempts to reduce energy consumption associated with BREC facilities by turning the office lights off whenever no one is present and powering down department computers over the weekend.

Currently, the department is not allowed to power down the computers during the work week due to software updates.

➤ **Park Operations**

Objective 4.I: Park Operations currently has a directive followed by their Trades Department to convert all old, inefficient lighting to new, more efficient lighting. This is done by replacing ballasts and bulbs in older buildings as repairs are needed. Over time, they have been able to install hundreds of more efficient lighting systems in BREC buildings. Park Operations is continuing this process as they perform work in each facility.

Park Operations has also taken the initiative to install photocells and digital times on lights. Their crews have been installing photocells and/or digital timers on lights to ensure they do not burn during daylight hours. They are upgrading to digital timers whenever possible because they provide a more accurate control of the lights, which helps during time changes. Overall, this has increased building efficiency and reduced the amount of electricity wasted at facilities by keeping lights off when not needed.

Objective 4.II: It has been the goal of Park Operations for the past several years to reduce the amount of fuel used in daily duties. They accomplished this by reducing the trips back and forth to the DPW landfill (located in Baker/Zachary). In order to accomplish this, Park Operations contracted private waste removal companies to place dumpsters in strategic locations, thus giving them options to dump within BREC maintenance districts, versus having to drive to the landfill each time a trash truck was full. The contractor uses compactor trucks to remove the trash, thus reducing their amount of trips to the landfill.

Additionally, Park Operations has reduced the size of some of the vehicles within their fleet, thus burning less fuel. Along with contracting dumpsters, they designed and installed cages on the back of BREC trucks at each grounds shop. This gave each crew the ability to put trash in the back of a  $\frac{3}{4}$  ton truck and bring it to a dumpster nearby, versus hauling it in a large diesel trash truck to the dump each day. They also utilize trailers to haul more trash by one vehicle, which has further increased their productivity and reduction of fuel. Between 2010 and 2012, Park Operations successfully reduced their fuel usage by over 23,000 gallons.

➤ **Planning and Engineering**

Objective 4.I: The Planning and Engineering Department uses motion sensors in the administrative office restrooms and department filing rooms to ensure lights are only used when needed.

➤ **Special Facilities**

**Bluebonnet Swamp Nature Center**

Objective 4.I: BSNC has made it a goal to reduce the energy consumption in the nature center building. They have done this by changing out most incandescent bulbs to high-efficiency fluorescent ones and they encourage “lights out” during camp programs in any room not in use, including restrooms. They regulate day-time and night-time cooling and heating features to maximize efficiency and they stockpile items to be laminated so they can be all done in large quantities to minimize machine start-up periods. In general BSNC staff keep lights off or reduce the amount of “on” lights when lighting from windows is sufficient for viewing exhibits.

Objective 4.II: BSNC has also made it a goal to reduce energy consumption associated with transportation. They have worked to accomplish this goal by utilizing a BREC runner for transport of documents that aren’t time-sensitive and to get warehouse supplied to their facility when needed. Additionally, staff no longer conduct monthly patrols of Blackwater Conservation Area, eliminating transportation to and from the site and only use BREC vehicles when driving to off-site summer camp locations. BSNC staff coordinates weekly, periodic shopping runs to ensure the efficiency of supply runs and cut down on the number of needed trips. Additionally, they order items online in order to reduce the need for pick-up locally.

➤ **Zoo**

Objective 4.I: BREC’s Baton Rouge Zoo has made it a point to reduce energy consumption at their facility and use timers and photo cells on all outdoor lights. Additionally, they have motion sensors installed on the lights in the restrooms in order to reduce the amount of wasted energy. Taking it a step further, the zoo does not use external energy at all on their ZooKey boxes and instead have solar panels that provide energy for them.

**Goal 5: Water Conservation and Water Quality Protection**

➤ **Conservation Department**

Objective 5.II: The Conservation Department works hard to increase the water quality in EBR Parish through the education of the public and service-learning projects

which engage the local community. It is the hope that by educating the public on the causes on water quality degradation they will help to eliminate the problem from the source reducing the need for clean ups. Most recently, in March 2014, the Conservation Department conducted an educational campaign for the Greenwood Lake Watershed in an attempt to reduce the amount of non-point source pollution and floatable trash that enters the lake. This project was based on a past project done in the Bluebonnet Swamp Watershed which significantly reduced the floatable trash in the swamp in the 1990's. It is the hope that if this project is successful it will be used elsewhere throughout the parish to clean other BREC and parish waterways.

Additionally, the Conservation Department leads countless volunteer and service learning projects with various groups which work to clean up local waterways. Projects have included the cleaning of University Lake through Global Youth Service Day, cleanups of Greenwood Lake and Bayou Manchac and City Park Lake through LSU's event, Geaux Big Baton Rouge.



*Pamphlets used during the public education campaign in the Greenwood Lake Watershed. Material was hung on the doors of residences and businesses in the watershed with the permission of the Baker City Council and Baker City Police. Weekly trash surveys will be used to determine the effectiveness of the program. Lake cleanups are frequently done through volunteer groups with the help of Outdoor Adventure and Park Operations staff.*

## ➤ Planning and Engineering

**Objective 5.I:** The Planning and Engineering Department has made it a goal to reduce BREC's water usage by replacing old toilets and urinals with new models that reduce water consumption.

**Objective 5.II:** In order to increase the water quality in EBR Parish, the Planning and Engineering Department has incorporated bioswales, wet gardens and porous pavement into park designs in order to reduce the amount of non-point source pollution in local waterways and reduce erosion. These engineering designs

reduce the amount of pavement runoff and allow storm water to cycle naturally through wetland systems which filter out pollutants and slow the water down, reducing erosion of topsoil.

➤ **Recreation**

**Golf**

Objective 5.I: In an attempt to reduce the strain on the City/parish water supply, a few BREC golf courses such as the City-Brooks Course is equipped to use surface water for basic course watering needs. The system has in the past had a siltation problem but within the next few months a floating filter will be used to eliminate clogging problems and once again the City Park course will draw its water from natural sources.

➤ **Special Facilities**

**Bluebonnet Swamp Nature Center**

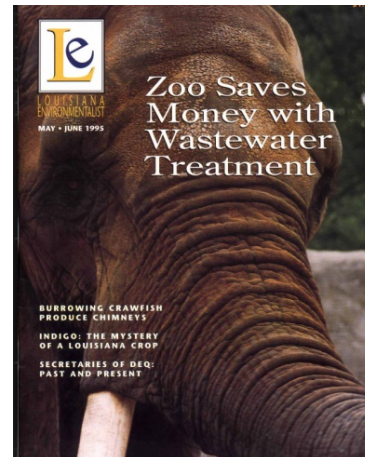
Objective 5.I: BSNC attempts to reduce the amount of water used at their facility in several ways. BSNC staff keeps the fountain in the back of the building off at all times except during regular maintenance and large events. The fountain is fitted with a “float” device so water can be replaced only when needed instead of a continual stream replacement. Staff also encourages “low-flow” usage of sinks for hand-washing and “no dripping” during summer camp programs. They use full-sink soaking and low-flow rinsing for day camp related dish washing. Additionally, the BSNC utilizes native flora in landscaping which require no regular watering to thrive.

Objective 5.II: The BSNC also tries to decrease the negative impacts on water quality on-site and off-site at areas identified and being within the BSNC watershed. They do this by collecting and picking up garbage on site to prevent it from getting into drains and drainages. Staff offers watershed education during programming in order to educate the public on how trash and pollution affects water quality within the parish and they can help. Additionally, the BSNC parking lot is a prime example of environmentally sustainable design, created specifically to reduce the heavy metals and sediment runoff through natural filtration and trapping features. The BSNC has also conducted watershed awareness programs which stencil storm drains within the Bluebonnet Swamp watershed in an attempt to prevent dumping of chemicals, oils and trash down the drain which then enter the swamp. The Swamp also provides material to the public providing information about the “green” engineering in the parking lot design.

➤ **Zoo**

Objective 5.I: BREC's Baton Rouge Zoo has a long history of conserving water through innovative design and they will continue to incorporate sustainable design into park facilities which will decrease water consumption. Examples of this design include water conserving urinals, sinks and toilets in the zoo bathrooms. However the best example of the Zoo's dedication to sustainable practices, includes the wastewater treatment facility which was built onsite to filter and clean the water used by the zoo.

The treatment facility which consists of a 2.2 acre marsh cycles gray water from the Zoo through the marsh where the water is cleaned through natural processes and then back to the zoo to be used. The Zoo Marsh Treatment Facility will continue to be used, decreasing the amount of new water used at the facility while reducing the impact on the local water treatment plant.



*A picture of the water treatment facility at BREC's Baton Rouge Zoo which cleans water used by the zoo, cleans it, and then cycles it back through to be used for the daily maintenance of the facility and care of the animals. The zoo was well recognized for this innovative sustainable design which not only reduces water consumption but also saves the zoo money.*

## **Goal 6: Sustainable Design and Construction of Buildings**

➤ **Planning and Engineering**

Objective 6.I: The Planning and Engineering Department attempts to incorporate sustainable design into every park's master plan as feasible and requires contractors to follow environmentally friendly procedures on construction sites and throughout building construction. BREC currently uses shielded light fixtures that direct light down to the amenity that is intended to be illuminated in new construction and replace/retrofit existing light fixtures on a case by case basis.

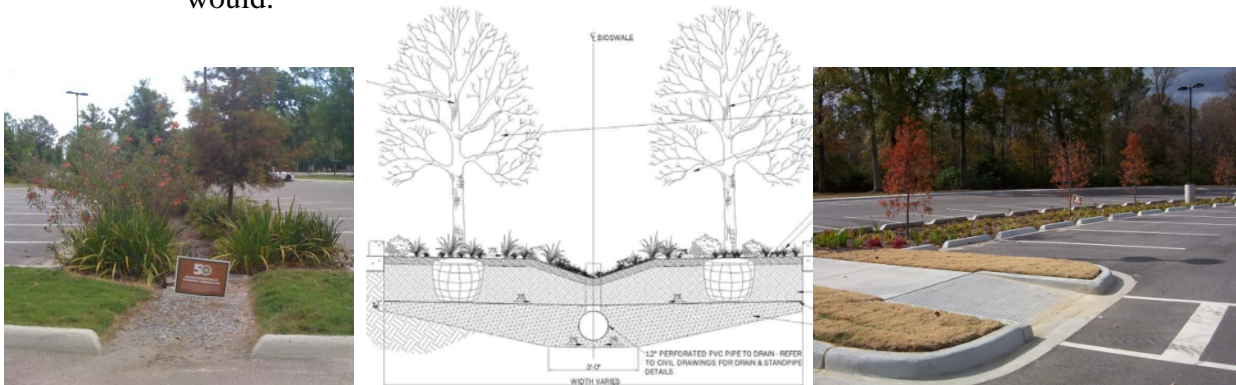
The Planning and Engineering Department has been able to maximize efficient use of electricity over the years by replacing antiquated lighting with more efficient devices throughout the park system. This has been an ongoing project since the start of Imagine Your Parks in 2004. To help BREC with cost saving efforts CIP electrician Scott McManus and his crew have been experimenting with LED and compact florescent light fixtures and the results are promising. For example, some old existing metal halide 150 watt wall pack fixtures are being replaced with a new Lithonia brand compact fluorescent fixture called a TWS. The 42 watt bulb is equivalent to about 125 watt output at 2/3 less energy consumption and it is a weatherproof and shatter resistant light fixture. This fixture is used on the exterior of Recreation Centers and other structures to provide safety and security. Also, we are slowly eliminating the large 400 watt and 1000 watt flood lights at the entrances to several buildings. These fixtures tend to create a blinding effect to people entering the facility. The TWS fixtures are mounted lower therefore illuminating the path to the building instead of casting light outwards into the open sky. The lower fixture also enables maintenance crews to access the fixtures without the use of a lift or bucket truck. We are transitioning BREC's overall exterior lighting towards night sky friendly fixtures and lighting locations.

New fixtures that reduce power consumption have also been used in interior applications. Where it makes economical sense, existing "T 12" fluorescent fixtures are being replaced with newer "T 8" and "T 5" fixtures. The new fluorescent lights use much less electricity with the same or sometimes more light output than the older fixtures. Furthermore, they produce less heat which reduces fire hazards and reduces the A/C loads and cooling costs.

Also, a new type of timer for exterior safety lights is being used to replace existing timers as they wear out. These new timers will not lose track of time or the preset ON/OFF schedule for at least 72 hours in the event of a power failure. It will then recharge itself without battery replacement. This reduces the number of maintenance visits to Recreation Centers to re-program timers after a power outage. The timer is able to be programmed for Daylight Savings Time as well. Exterior lighting is therefore more reliable and maintains the proper schedule to insure our resources are being used efficiently.

Given that we have so many types of facilities and applications, the electricians are continually looking for energy efficient options that are cost friendly and able to withstand the sometimes very demanding park environment.

Objective 6.III: The Planning and Engineering department also has a positive impact on local water sheds and water treatment facilities through their innovative design of parking lots. BREC has incorporated bioswale technology into parking lots in order to reduce the amount of impermeable areas within the parish and collect and filter storm water through natural processes. By incorporating native plants and swales into the landscape water is naturally filtered and provided a place to go following a large storm. Instead of eroding away important topsoil or running along concrete into large waterways and ditches unfiltered, the bioswales and retention ponds slow down the movement of storm water and prevent flooding downstream similar to the way a natural wetland habitat would.



*Examples of bioswales incorporated into BREC parks along with the design concept behind them. Bioswales provide a place for water to go once it hits the impermeable pavement which allows it to be filtered and slowly released back into the water cycle.*

Objective 6.IV: The Planning and Engineering department works hand in hand with the urban foresters on staff to incorporate native plants into park design while increasing the tree cover in urban parks overall.

### ➤ **Special Facilities**

#### **Bluebonnet Swamp Nature Center**

Objective 6.I: BSNC reduces light pollution around their facility by using recessed fixtures which point down and shield light from spilling upward. They use a single stadium on the perimeter of staff parking lot which is not used and awaiting modification to reduce light pollution produced from it.

Objective 6.IV: BSNC protect the integrity of natural habitats through design by landscaping with native species and removing invasive species from habitat with the park and replacing them with high-wildlife value native species. Additionally, the BSNC staff works with associated partners for guidance in habitat improvement when possible for key species. As part of their park management and future design process the park also monitors adjacent

properties for best management practice (BMP) issues which may adversely affect the swamp.

### **Zoo**

Objective 6.I: BREC's Baton Rouge Zoo decreases light pollution through sustainable design through the use of motion sensors on the lights in all the zoo bathrooms since 2010.

Objective 6.II: Additionally, timers and photocells are on outdoor lights throughout the zoo in order to reduce unnecessary use of lights and ensure that all are turned off when not in use.

Objective 6.III: When designing zoo facilities, water saving urinals, sinks and toilets are incorporated to reduce water consumption.

## **Goal 7: Environmentally Preferred Purchasing**

### ➤ **Planning and Engineering**

Objective 7.III: BREC's Planning and Engineering Department purchases environmentally friendly materials for construction including items such as recycled, crushed concrete in the stead of limestone and playground equipment and mulch made from recycling materials.

### ➤ **Special Facilities**

#### **Bluebonnet Swamp Nature Center**

Objective 7.III: The BSNC staff attempts to purchase EP materials for use during maintenance of the nature center and for environmental programming.

### **Zoo**

Objective 7.III: The Zoo attempts to purchase environmentally friendly materials for use throughout the park including the surface of the KidZoo playground which was made of mulch with 100% recycled tires saving 9,877 tires from the EBR landfill. Additionally, the benches found throughout the Zoo are constructed of plastic made from recycled milk jugs.

## **Goal 8: Monitoring and Tracking**

### ➤ **Conservation**

Objective 8.I: The Conservation Department maintains a list of conservation related programs and achievements through the creation of BREC's annual report. Additionally, the conservation department is responsible for documenting its activities in order to provide evidence that BREC is meeting the conservation

related standards required by CAPRA. The department is also tasked with creating this green list of achievements and will be responsible for maintaining and updating it with new achievements each year.

Objective 8.II: Through the frequent revisions to BREC's Natural Resource Management Plan the conservation department recognizing what has been achieved and what goals have yet to be obtained, removing and adding items to the plan as necessary.

Additionally, the conservation department is responsible for tracking all materials recycled throughout the system excluding the Zoo. To date this includes the recycling dumpster at the administrative offices and at Burbank Soccer Complex.

➤ **Special Facilities**

**Zoo**

Objective 8.II: Tracks the amount of materials recycled by the Zoo by monitoring the amount picked up from the recycling dumpster weekly.